

EXAM DATE : 1-September-2016 Evening Shift

Question 1. Select the related word/letters/numbers from the given alternatives:

Book:Pages::Wall:?

Options:

- (A) SAND
- (B) CEMENT
- (C) BRICKS
- (D) STONES

Question 2. Select the related word/letters/numbers from the given alternatives:

LN PQ : ACEF :: TUXY : ?

Options:

- (A) IMKL
- (B) IKMO
- (C) IKMN
- (D) PKLR

Question 3. Select the related word/letters/numbers from the given alternatives:

4:20::8: ?

Options:

- (A) 74
- (B) 70
- (C) 72
- (D) 78

Question 4. For the following questions

Find the odd word/letters/number from the given alternatives.

- (A) Bud
- (B) Branch
- (C) Leaf
- (D) Plant

Options:

- (A) A
- (B) B
- (C) C
- (D) D

Question 5. For the following questions

Find the odd word/letters/number from the given alternatives.

- (A) ABD
- (B) FGI

- (C) LMO
- (D) STU

Options:

- (A) A
- (B) B
- (C) C
- (D) D

Question 6.For the following questions

Find the odd word/letters/number pair from the given alternatives.

- (A) 24-42
- (B) 36-63
- (C) 37-73
- (D) 35-51

Options:

- (A) A
- (B) B
- (C) C
- (D) D

Question 7.Arrange the following words as per order in the dictionary.

1. Manifest
2. Meticulous
3. Meridian
4. Merchant

Options:

- (A) 1,4,3,2
- (B) 2,1,4,3
- (C) 1,3,2,4
- (D) 2,3,4,1

Question 8.Which one set letters when sequentially placed at the gaps in the given letter series shall complete it?

M _ OMMN _ M _ NOMMN _ M

Options:

- (A) O N M O
- (B) N O M O
- (C) M O N M
- (D) N N M O

Question 9.Which number will complete the series?

14, 27, 52, 101, 198, ?

Options:

- (A) 381

- (B) 395
- (C) 391
- (D) 394

Question 10. M is son of P, Q is the grand-daughter of O, who is the husband of P. How is M related to O?

Options:

- (A) Son
- (B) Daughter
- (C) Mother
- (D) Father

Question 11. Ramesh is richer than Satish but Jaya is less rich than Ramesh. Ram is less rich than Jaya but richer than Satish, but is not as rich as Ramesh. Ramesh is less rich than Navin. The richest amongst them is?

Options:

- (A) Ramesh
- (B) Satish
- (C) Navin
- (D) Jaya

Question 12. From the given alternative words, select the word which cannot be formed using the letters of the given word:

CARPENTER

Options:

- (A) NECTAR
- (B) CARPET
- (C) PAINTER
- (D) REPENT

Question 13. If FRIEND is coded as HUMJTK, how can CANDLE be written in that code?

Options:

- (A) EDRIRL
- (B) ESJFME
- (C) DCQHJK
- (D) DEQJQM

Question 14. If A denotes $-$, C denotes \times , D denotes \div , E denotes $+$, then $14C3A12E4D2= ?$

Options:

- (A) 6
- (B) 17
- (C) 28
- (D) 32

Question 15. If $879= 8$,
 $625= 1$,

586 = 9,
then 785 = ?

Options:

- (A) 6
- (B) 7
- (C) 8
- (D) 9

Question 16. Find the missing number from the given alternatives:

8	7	6
7	6	5
6	5	4
90	65	?

Options:

- (A) 54
- (B) 44
- (C) 34
- (D) 26

Question 17. Sham goes to his friend's house that is straight 10 Km from his house. On his way back, he takes a right turn and walks 2 Km and again takes a right turn and walks for 10 Km before he takes a right turn again. How much distance is Sham still away from his house?

Options:

- (A) 10 Km
- (B) 8 Km
- (C) 12 Km
- (D) 2 Km

Question 18. One or two statements are given followed by two conclusions, I and II. You have to consider the statement to be true, even if it seems to be at variance from commonly known facts. You are to decide which of the given conclusions/assumptions can definitely be drawn from the given statement. Indicate your answer.

Statement: All boys are tall.

Rajiv is a boy.

Conclusion I: Rajiv is tall.

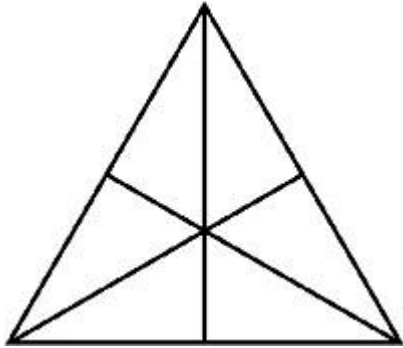
II: Rajiv is not tall.

Options:

- (A) Only conclusion I follows
- (B) Only conclusion II follows

- (C) Both conclusion I and conclusion II follow
- (D) Neither conclusion I nor conclusion II follows

Question 19.How many triangles are there in the question figure?



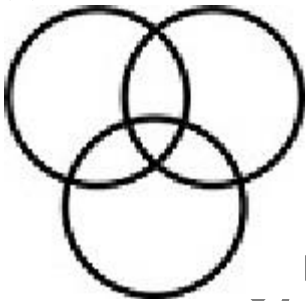
Options:

- (A) 6
- (B) 10
- (C) 12
- (D) 16

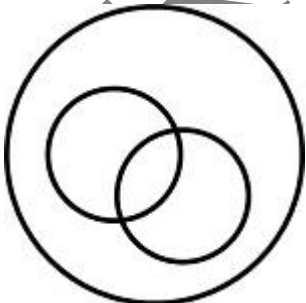
Question 20.Which of the following diagrams represent the relationship between Awards, Pulitzer Prize and Oscars?

Options:

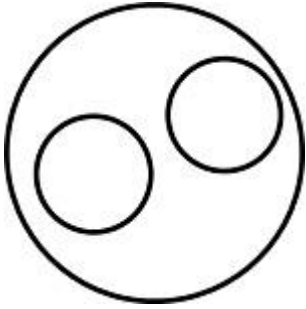
(A)



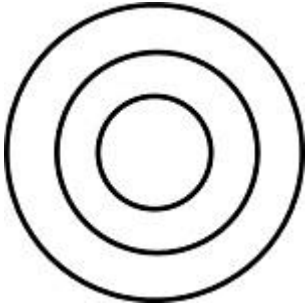
(B)



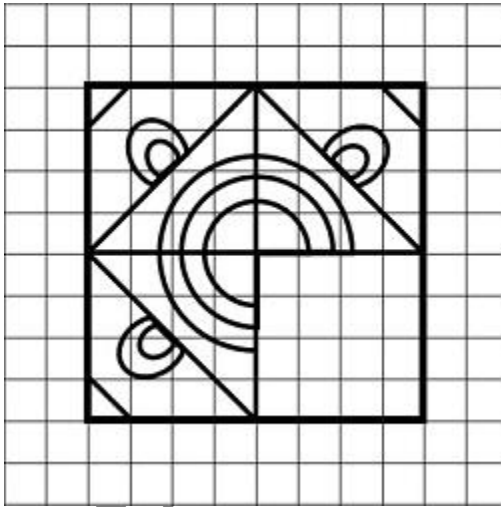
(C)



(D)

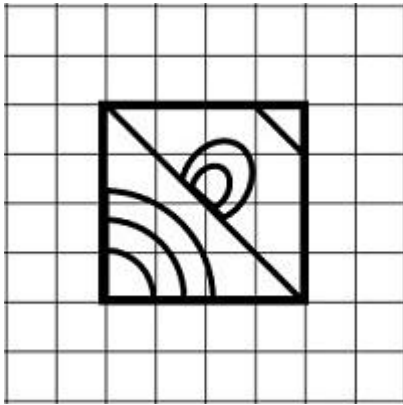


Question 21. Which answer figure will complete the pattern in the question figure?

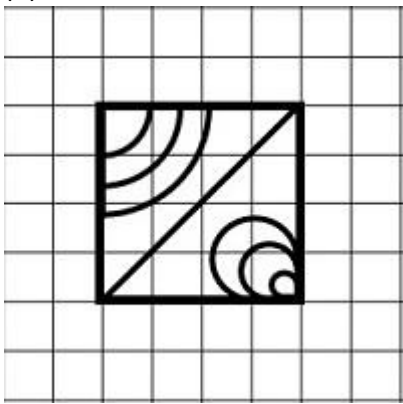


Options:

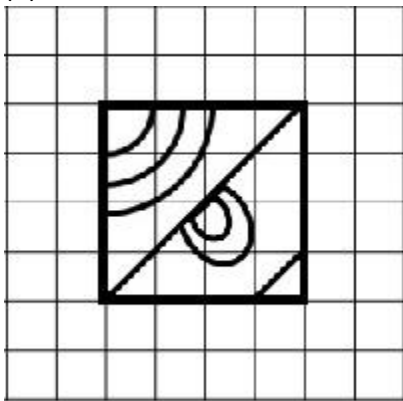
(A)



(B)

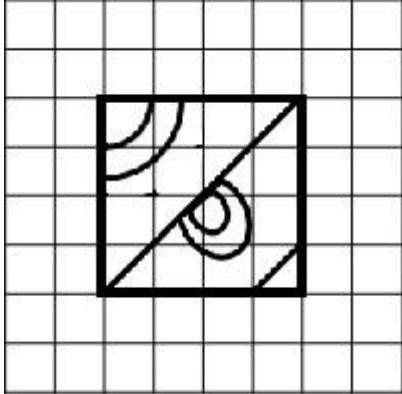


(C)

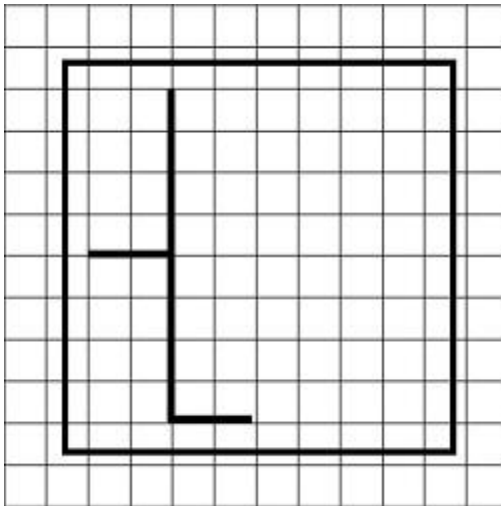


TSBOOK.COM

(D)

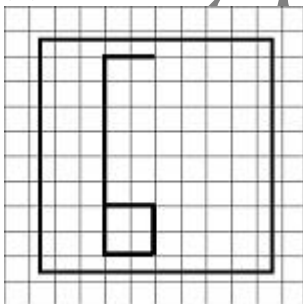


Question 22. From the given answer figures, select the one in which the question figure is hidden/embedded.

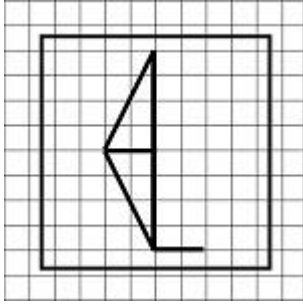


Options:

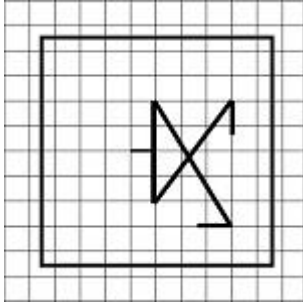
(A)



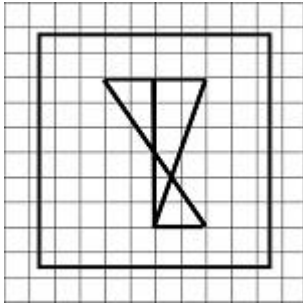
(B)



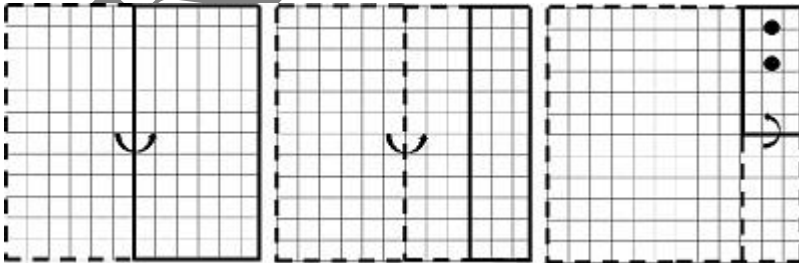
(C)



(D)

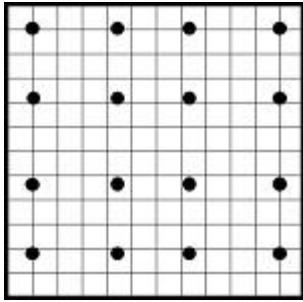


Question 23. A piece of paper is folded and cut as shown below in the question figures. From the given answer figures, indicate how it will appear when opened.

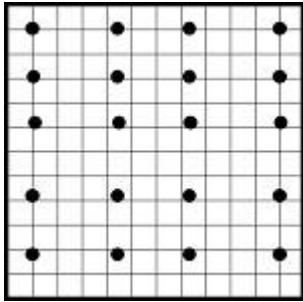


Options:

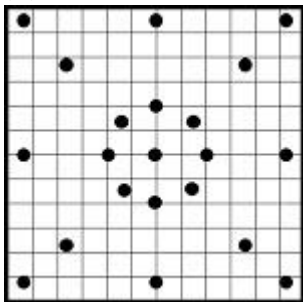
(A)



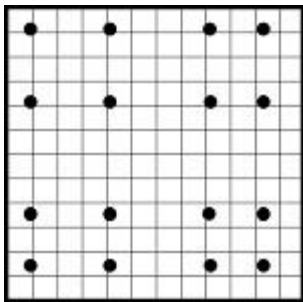
(B)



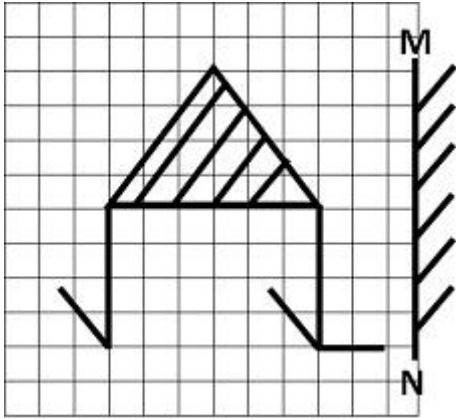
(C)



(D)

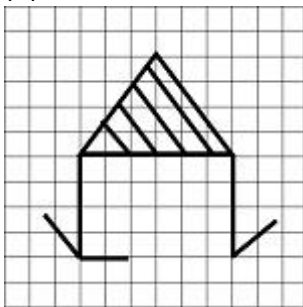


Question 24. If a mirror is placed on the line MN, then which of the answer figures is the right image of the given figure?

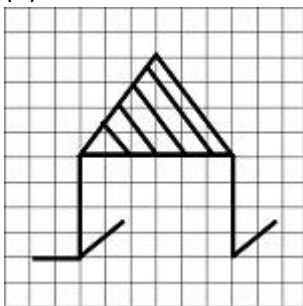


Options:

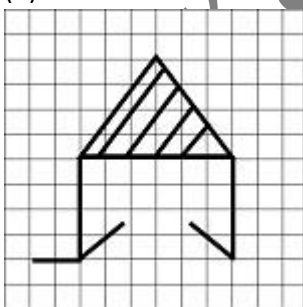
(A)



(B)

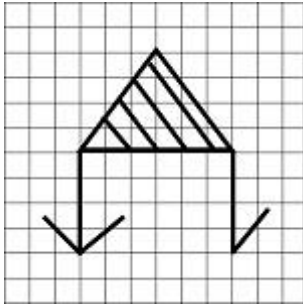


(C)



amsbook.com

(D)



Question 25. In this question, the sets of numbers given in the alternatives are represented. The columns and rows of Matrix I are numbered from 0 to 4 and that of Matrix II are numbered from 5 to 9. A letter from these matrices can be represented first by its row and next by its column, e.g., D can be represented by 04,12, etc., and 'I' can be represented by 65, 79, etc. Similarly you have to identify the set for the word 'BANK'.

Matrix-I						Matrix-II					
	0	1	2	3	4		5	6	7	8	9
0	B	N	G	L	D	5	A	I	K	O	R
1	G	L	D	B	N	6	I	K	O	R	A
2	D	B	N	G	L	7	K	O	R	A	I
3	N	G	L	D	B	8	O	R	A	I	K
4	L	D	B	N	G	9	R	A	I	K	O

Options:

(A) 42,69,14,98

(B) 00,55,33,57

(C) 21,67,30,86

(D) 42,78,43,58

Questions	Answer	Questions	Answer	Questions	Answer	Questions	Answer	Questions	Answer
1	C	2	C	3	C	4	D	5	D
6	D	7	A	8	B	9	C	10	A
11	C	12	C	13	A	14	D	15	A
16	B	17	D	18	A	19	D	20	C
21	C	22	B	23	D	24	C	25	A